



BERWICK LODGE NEWSLETTER

MORE INFO:



(03) 9709 6700



berwick.lodge.ps@education.vic.gov.au



berwicklodgeps.vic.edu.au

NEWSLETTER NO 1

1ST FEBRUARY 2024

THE CANTEEN WILL BE OPEN FROM FRIDAY 2ND FEBRUARY

**ALL CANTEEN ORDERS MUST BE DONE ONLINE VIA THE Qkr APP
CANTEEN IS OPEN MONDAY, WEDNESDAY & FRIDAY**

ACTING PRINCIPAL'S REPORT

WELCOME BACK

A very warm welcome back to everyone, especially to our new families who have joined our school community and our new graduate teachers, Miss Sahra Eishold, Miss Emily Williams and Mrs Brodie Prout. We also welcome back Mrs Laura Rawlings, an experienced teacher who is returning from family leave.

It has been a wonderful start to the school year with our students and staff enjoying getting to know each other whilst settling into the routine of school. It was lovely to see the excitement on faces as students started the school year and even a few tears from parents. Thank you to all our staff and families for assisting in making the start to the year so successful. Today whilst on yard duty, I had the opportunity to informally talk to some of our senior students and their favourite things about being back at school were seeing their friends and teachers.

I am continuing in the acting Principal role whilst Mr Henry Grosseck is on personal leave. My door is always open so please don't hesitate to make contact if required and I encourage all families to introduce yourselves to your child's teacher.

THANK YOU PARENTS AND FRIENDS ASSOCIATION (PFA)

Thank you to our PFA members who organised a "Tea and Tears" morning tea for our Prep parents. It was lovely to meet some Prep families and welcome them to our school. Our first PFA meeting for the year will be held on Monday 12th February, immediately after our school assembly. The meeting will be held in the staff room and all interested parents are welcome to attend.

Continued...



BERWICK LODGE PRIMARY SCHOOL

LEARNING FOR LIFE

ACTING PRINCIPAL'S REPORT

COMPASS – COMMUNICATION WITH FAMILIES

Our communication system with families is via Compass. It is vital that all families log onto Compass and check regularly for information and updates. All notices, payments, emails from teachers, and many other very important messages are posted on this site. Log on details were emailed to all families just prior to the start of the school year. If you are having any difficulties in accessing Compass, please contact the office for assistance.

PARKING PICK UP/DROP OFF ZONES

Our students' safety is paramount when moving to and from school. Please be aware of where our pickup and drop off zones are and the signage for stopping and/or parking. The local bylaws officers often patrol the area and will fine parents for stopping/parking incorrectly. The staff car park is only for our staff and is not an access point into the school. Please come in via the front gate or other footpath entrance points around the school. Consider parking in a side street and walking the short distance to school. Together as a community, we want to have the movement around our school area as safe as possible for everyone.

SAVE THE DATE – “WELCOME TO BERWICK LODGE – MEET THE TEACHER”

On Monday 19th February we are planning a “Welcome to Berwick Lodge – Meet the Teacher” afternoon where families will have the opportunity to visit their child's classroom and participate in some activities outside with their family. This is a great opportunity to informally meet your child's teacher if you haven't already done so. We understand that some families may have private information they would like to share with their teacher, so please don't hesitate to contact the teacher and organise a separate time if required. We look forward to welcoming everyone to Berwick Lodge and more details will be provided next week.

FREQUENTLY ASKED QUESTIONS (FAQs)

Q. How do I share confidential and/or personal information with my child's teacher?

A. If you have personal information to share with your child's teacher, please contact them to organise a convenient time to discuss. This could be face to face, email message or via a phone call.

"You're braver than you believe, and stronger than you seem, and smarter than you think." – A.A. Milne

Sandra McCrum

DIARY DATES:

Meet the Teacher
School Photos

Monday 19th February
Tuesday 12th March

NOTICES AND PAYMENTS DUE:

Grade 6 T-Shirts and
Windcheater Payment

Friday 2nd February

HAVE YOU CHANGED YOUR ADDRESS OR PHONE NUMBER?

Please ensure you let the school office know if you have changed address or updated mobile phones with new numbers. This information alleviates stressful situations for students when they are ill and we cannot contact parents.

Assistant Principals' Report



★ **WELCOME BACK**

★ Welcome back to all our families and students. We hope that everyone enjoyed spending time with their families during the holiday period. Teachers and staff here at Berwick Lodge are excited to start the New Year and look forward to the many fun activities ahead!

★ **SUNSMART**

★ All student are required to have a SunSmart hat due to UV rating. If they don't have a hat, they will be required to play in the shade.

★ **INTRODUCING OUR 2024 SCHOOL CAPTAINS.**

★ Konstandina 6L and Athvithan 6L are our School Captains and are joined by Jonoel 6L and Tomoe 6L as the Vice School Captains.



★ **SUPERVISION OF STUDENTS BEFORE AND AFTER SCHOOL**

★ A reminder to parents that the best time for their children to arrive is between 8.45am and 8.55am, when the teaching staff are on duty supervising the yard. The yard is supervised by staff between 3:30pm and 3:45pm after school. Students in the playground outside supervision times are at risk. If it is necessary for children to be at school either early or late, then parents should consider enrolment in the OSHC Program or make other arrangements. If for any reason your child has not been picked up by 3:45pm they will be directed to the front office area where they must wait until they are collected. These measures are not meant to cause any inconvenience, they are for the safety and security of all our students.

★ *Angela Maskery and Sharyn King*



Photo Day



PHOTO DAY

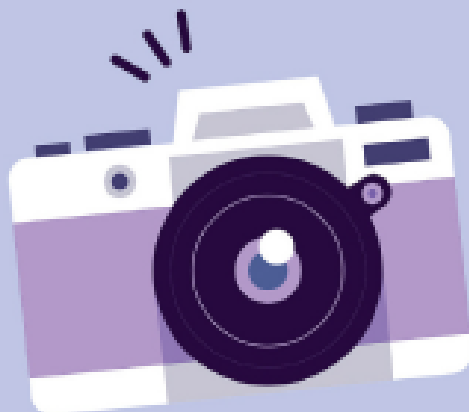
COMING SOON!

Tuesday 12th March 2024

Head to our website to view the available packages and to place your order

VISIT OUR WEBSITE & ENTER THIS CODE:

X3033EL52B



ORANGE

Berwick Lodge Primary School

www.theschoolphotographer.com.au

CANTEEN NEWS

CANTEEN ONLINE ORDERING SYSTEM



Berwick Lodge canteen LUNCH ordering system called Qkr (pronounced Quicker) is available for canteen lunch orders

Qkr by MasterCard can be downloaded for **FREE** from Apple's App store for iPhones, iPhone app for iPads, or from Google Play for Android phones and tablets.

What families need to do TO SET UP ORDERING:

- Download the Qkr App to your phone or tablet.
 - Register
 - Find our School: Berwick Lodge P.S (from "Nearby Locations")
 - Register your child/ren – Select Student Profile
 - Order Meals (you can change, cancel or repeat orders)
 - Make Payment: Up to 5 cards can be linked.
- **To CANCEL an order:** Open the QKR app and tap Activity, scroll to order history, tap the red circle with the minus symbol to cancel. Cancelling needs to be done prior to close off at 9.00am for that day.

NO COST TO DOWNLOAD THE APP!!

NO FEES, NO ACCOUNTS, you pay as you go for food only!!

- Online orders must be placed / or cancelled by 9.00am, as the online order system will close shortly after.
- Orders can be placed online up to 2 weeks ahead.
- Make sure you link your child with the correct year level and home group.
- **HELP:** If you experience issues contact Anne from Bellbrook Catering on 0488 052 522. Please do not contact the school.

REMINDER

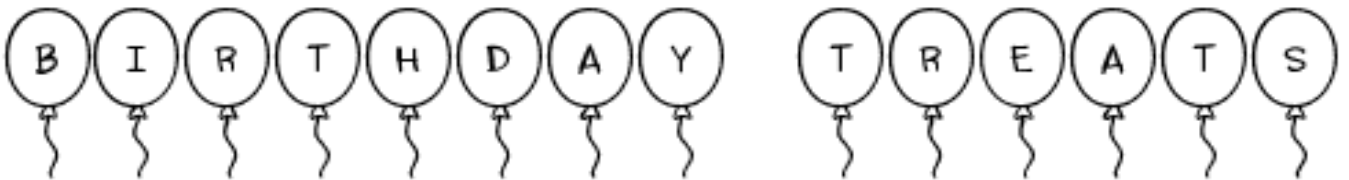
For all existing families please remember to edit your child's profile to their new homegroup/class for 2024.

This helps with the timely delivery of lunch orders.

SICKBAY NEWS

Thank you to all the families who have returned their medical forms back for this year.

We are still missing a substantial amount of forms so if your child has Asthma, Anaphylaxis, Allergies or requires medication at school, please complete these forms and return them back immediately. If you require these forms again, you can find them on Compass in the 'School Documents' tab under 'Parent Resources'.



Parents may bring in food treats to celebrate their child's birthday. However, this treat **must be** individually commercially packaged with ingredients listed (ie: fun-size chocolate) and distributed to students at the end of the school day.



LIBRARY NEWS

Welcome to the Library 2024. We hope you had a lovely break over Summer and managed to fit in some reading.

All students will have one Library session per week where they can borrow books to take home. Prep students can take one book and all other students can have two books. These have a two week return but may be re-borrowed if you need to do so. Prep students usually borrow and return every week rather than keeping a book for two weeks.

Please make sure your child has a LIBRARY BAG for their borrowing. This can be the blue, school satchel, a tote bag, a large zip lock bag, plastic grocery bag or a large pencil case. This is to keep our books safe, clean and dry while travelling to and from home and school.

We will also have the library open at lunchtime, twice per week, for students to read, play games, listen to stories, colour in and participate in some other fun activities. We hope to see lots of new faces this year



BOOK CLUB ORDERS

Each term we have two issues of the Scholastic Book Club brochures. All ordering is done online then the books are delivered to school for distribution.

Issue one will be distributed this week and there are some fantastic offers inside. All parent orders over \$35 will receive a \$5 credit, you can start a new series from only \$3 and there are 50 bonus, BARGAIN BOOKS available online.

All orders need to be placed by Wednesday, 14th February by 5:00pm.

HAPPY READING EVERYONE,

Mrs Tsekouras and Ms Taylor



PFA NEWS



Yellow Long Sleeve Top



Blue Sports Top



Yellow Short Sleeve Top



Blue Bomber Jacker



Blue Rugby Jumper



Blue Crew Neck



Sports Shorts - Basketball
Shorts - Thinner fabric



Shorts - Thicker fabric



Trackpants



Shorts Pleated - Girls



Skirt - Sports Skort



Skirt - Netball/Tennis Skirt



Summer Dress



Winter Dress



Beanie