



# Berwick Lodge Primary School

Mansfield St, Berwick  
Ph 03 9707 1766 Fax 03 9796 2198  
Email [berwick.lodge.ps@edumail.vic.gov.au](mailto:berwick.lodge.ps@edumail.vic.gov.au)  
Web [www.berwicklodgeps.vic.edu.au](http://www.berwicklodgeps.vic.edu.au)

NEWSLETTER NO 2

9TH FEBRUARY 2023

**ALL CANTEEN ORDERS MUST BE DONE ONLINE VIA THE Qkr APP  
CANTEEN IS OPEN MONDAY, WEDNESDAY & FRIDAY**

## PRINCIPAL'S REPORT

### APOLOGY

As I mentioned in my email to all parents earlier this week – my apologies for the inconvenience and stress that having our communication platform, Sentral, down and not operating for several days. We are back on deck now and hopefully the technical adjustments made will prevent such a breakdown occurring again. We will be transferring from Sentral to Compass in Semester 2, a move we are confident will improve the service.

### PARENT/TEACHER/STUDENT INTERVIEWS: CHANGE OF DATE

As I mentioned in my email earlier this week, due to the breakdown of Sentral, we have had no choice but to move these interviews back one week – this to provide parents with sufficient time to complement their booking time and for staff to confirm arrangements.

**REMINDER:** We will be conducting our first round of parent/teacher interviews on **Monday 27th February from 9.00am to 4.00pm**. Parents will be invited to book in their 10-minute

face-to-face meeting with their child/ren's teacher/s via the parent portal from early next week. Please note that these interviews include the student, parents', and teacher. Specialists will schedule a maximum of 30 interviews. Please be mindful of this when booking. If therefore you are not allocated an interview, please contact the specialist teacher concerned and make alternative

arrangements. **Please note that on this day, students attend school only for their parent/teacher/student interview time.** Students from 2KH will be on Thursday the 9th of March due to staff absence. These interview times will be uploaded to Sentral week commencing the 20th of February.

*Continued...*

LEARNING FOR LIFE...



# PRINCIPAL'S REPORT

## REMINDER: PICKUP/DROP OFF ZONES

**Please don't park and leave your car in the pickup/drop off zone (some parents have ignored last week's reminder on this). City of Casey Bylaws Officers have been informed and will issue traffic infringement notices to offenders**

*This zone, located in Collins Crescent, does have certain conditions attached – drivers are expected to remain inside their car and there is a time limit applicable for being there. City of Casey Bylaws officers regularly patrol our precinct and parking fines are issued for drivers who do not adhere to parking regulations.*

## SCHOOL PHOTOS - Tuesday 28th February

You can purchase your child/ren's photos online again – please see attachment included with this newsletter. All payments are made directly to the school photographer website. No cash payments to the school will be accepted.

## FREQUENTLY ASKED QUESTIONS (FAQs)

### Q. Why are we waiting to semester 2 to transfer from Sentral to Compass?

**A.** There is considerable training in the use of Compass required of the school Business Manager that must be undertaken prior to implementing the change successfully. We had intended to switch to Compass at the beginning of this school year. Jodie Chapman had completed the training in term 4 last year, but with her moving to Marnebek College, we have had to recommence the training program with Julie Begley, our new Business Manager

## QUOTABLE QUOTE

*'That silent voice deep within us all, too often rings loudest - in the unkindest of ways'*

*Henry Grossek*

## DIARY DATES:

District Swimming	Thursday 16th February
Parent Teacher Interviews	Monday 27th February
School Photos	Tuesday 28th February
Curriculum Day	Friday 10th March
State School Spectacular Rehearsal	Monday 27th March

## NOTICES DUE:

District Swimming Carnival	Tuesday 14th February
State School Spectacular	Friday 17th February

## HAVE YOU CHANGED YOUR ADDRESS OR PHONE NUMBER?

Please ensure you let the school office know if you have changed address or updated mobile phones with new numbers. This information alleviates stressful situations for students when they are ill and we cannot contact parents.

# Assistant Principals' Report

## ENGLISH ONLINE

Our prep teachers and students have been busy completing the mandated English online testing. Well done to all the new students. We are very impressed with how our Preps have settled into the school year. This year, the grade one students are also required to complete the English online test, during term one, so this will commence next week.

## READER/LIBRARY BAGS

All children are strongly encouraged to bring their blue reader bag from last year, or an alternative cloth bag to carry their reader, library books and notices to and from school each day. There is a limited supply of blue reader bags for purchase at the office for \$9.90.

## BEFORE AND AFTER SCHOOL

Before and after school, if your child is playing on the school grounds, please ensure that your child is playing on the appropriate playground equipment in their designated area. We have noticed that some of the students are playing on playground equipment that has not been designed for their age-group. The children are reminded regularly and are aware of which equipment is designated for their use. Please support staff in making sure that your child cooperates with the school rules.

## ANAPHYLAXIS

We do have several students who attend our school with severe allergies. Anaphylaxis is a severe allergic reaction that occurs after exposure to an allergen. The most common allergens for school-aged children are nuts, eggs, cow's milk, fish, shellfish, wheat, soy, sesame, latex, certain insect stings and medication. All staff are regularly trained in anaphylaxis management in line with the DET guidelines. To reduce the risk of a student suffering from an anaphylactic reaction at school we do the following:

- staff complete regular anaphylaxis training and updates
- staff and students are regularly reminded to wash their hands after eating
- students are not allowed to share food
- a general use EpiPen is stored in the sickbay for ease of access and each yard duty area has an additional EpiPen
- planning for off-site activities includes risk minimisation strategies for students at risk of anaphylaxis including
- supervision requirements, appropriate number of trained staff, emergency response procedures and other risk controls appropriate to the activity and students attending. Families are encouraged to not send products to school which may cause allergic reactions for students for example: nuts, peanut butter, or Nutella.

*Sandra McCrum, Angela Maskery and Sharyn King*

# Photo Day



# PHOTO DAY

# COMING SOON!

Head to our website to view the available packages and to place your order

VISIT OUR WEBSITE & ENTER THIS CODE:

**X3003EL50B**



## Berwick Lodge Primary School

ORANGE

[www.theschoolphotographer.com.au](http://www.theschoolphotographer.com.au)



# STUDENT OF THE WEEK AWARDS

## GRADE 1

IC – Adam

ILS – Harrison

IR – Isaya

IS – Parmbir, Sakindu

## GRADE 2

2C – Hazel

2KH – Archer

2G – Rafi, Dhaanya

2M – Naureen

**Congratulations** to the following students who received class awards recently.

Please note- only students with publicity approval will be listed in the newsletter.

# BOOK CLUB ORDERS

## **WELCOME BACK TO BOOK CLUB 2023**

This year you will receive two issues of the Scholastic Book Club per term.

If you are new to BLPS or want to order for the first time, just head to the Scholastic website, create an account and place your order using Berwick Lodge and your child's teacher and class name.

I hope you enjoy the new NEWSPAPER format.

The first issue cut off date is: 17/02/2023 at 3.30pm

**DON'T FORGET...**every order earns reward dollars for our school to purchase new books for the LIBRARY.

**HAPPY READING EVERYONE,**

Mrs Tsekouras and Ms Taylor



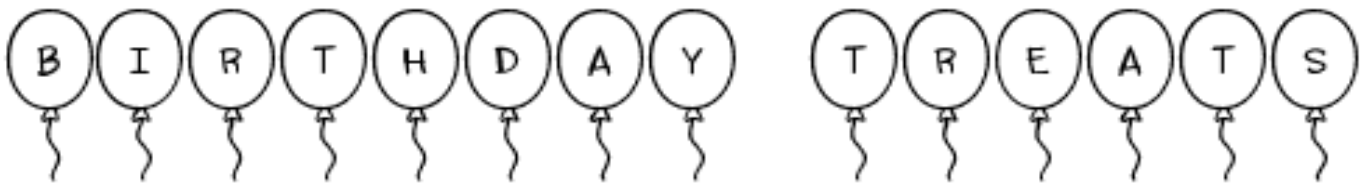
# SICKBAY NEWS

Thank you to all the families who have returned their medical forms back for this year.

We are still missing a substantial amount of forms so if your child has Asthma, Anaphylaxis, Allergies or requires medication at school, please complete these forms and return them back immediately. If you require these forms again, you can find them on the Parent Portal under “School Resources”

# LIBRARY NEWS

Please return any overdue library books from last year ASAP.



Parents may bring in

food treats to celebrate their child's birthday.

However, this treat **must be** individually commercially packaged with ingredients listed (ie: fun-size chocolate) and distributed to students at the end of the school day.

## DISTRICT SWIMMING TRIALS

Well done to the 38 students from Grades 4-6 that participated in the swimming trials at Kingswim on Wednesday 8th February.

All students displayed great enthusiasm and perseverance in all their events and should be super proud of their efforts.

A big thank you to the parent helpers and teachers who assisted me on the day as without them the day wouldn't have run as smoothly as it did.

A big congratulations to the 15 students who have been selected to represent Berwick Lodge at the upcoming Edwin Flack District Swimming Carnival to be held on Thursday 16th February at Noble Park Aquatic Centre. We wish these students the best of luck for their events.

**Go Lodgers!!!**

Kylee Muccignat  
P.E Teacher



# PFA NEWS

Hello all, we're back! We hope you have all had a great break and are enjoying being back in the swing of the school year!

We are planning our first BLPS Parent Friends Association meeting this coming Monday 13th February straight after assembly in the Out of School Care Building right next to the Basketball Courts.

This year we will be working on new activities to support parents alongside Anglicare with some great online webinars. We are also planning to hold our annual Mother's Day and Father's Day stalls as well as the school Fun Run later in the year. Other actions underway include installing our second outdoor library boxes at the school and continuing our weekly access to the Second Hand Uniform Shop.

Can you help us? All are welcome :) You don't need any prior experience or specific expertise - just an interest in meeting other awesome BLPS parents and families, volunteering for the school or being a voice for other parents. Some of the main reasons our team has joined the PFA is to:

- Help fundraise - We all know the costs of things that our kids need aren't always sufficiently government funded, like replacing the outdated and worn reader books, covering the increasing IT costs associated with smart learning, installing new play equipment or having kids celebrate special events like the Grade 6 graduation. So being a part of the PFA helps bring these extra needed funds into OUR SCHOOL for OUR CHILDREN.
- The social aspect - you get to meet new local people, especially if you're new to the area like most of us were and learn more about how the school works behind the scenes.
- We wanted to show our kids that we value the people and places that help them to learn, by being a part of and positively contributing to where they spend over six hours a day.
- And the joy of seeing their beautiful smiling faces when we are there supporting their school.

If you're interested in joining us for 2023 please come along to our next meeting this coming Monday 13th February 2023 at 9:30am in the Out of School Care Building (next to Basketball Courts) or email us at [pfa@berwicklodgeps.vic.gov.au](mailto:pfa@berwicklodgeps.vic.gov.au) and we can email you a membership form.

We look forward to seeing what we can all achieve together this year :)

Emma, Bek, Suzanne, Christine, Narelle PFA Vice President/Secretary/PFA Team



# CANTEEN NEWS

## CANTEEN ONLINE ORDERING SYSTEM



**Berwick Lodge canteen LUNCH ordering system called Qkr (pronounced Quicker) is available for canteen lunch orders**

Qkr by MasterCard can be downloaded for **FREE** from Apple's App store for iPhones, iPhone app for iPads, or from Google Play for Android phones and tablets.

### **What families need to do TO SET UP ORDERING:**

- Download the Qkr App to your phone or tablet.
  - Register
  - Find our School: Berwick Lodge P.S (from "Nearby Locations")
  - Register your child/ren – Select Student Profile
  - Order Meals (you can change, cancel or repeat orders)
  - Make Payment: Up to 5 cards can be linked.
- **To CANCEL an order:** Open the QKR app and tap Activity, scroll to order history, tap the red circle with the minus symbol to cancel. Cancelling needs to be done prior to close off at 9.00am for that day.

**NO COST TO DOWNLOAD THE APP!!**

**NO FEES, NO ACCOUNTS, you pay as you go for food only!!**

- Online orders must be placed / or cancelled by 9.00am, as the online order system will close shortly after.
- Orders can be placed online up to 2 weeks ahead.
- Make sure you link your child with the correct year level and home group.
- **HELP:** If you experience issues contact Anne from Bellbrook Catering on 0488 052 522. Please do not contact the school.

## REMINDER

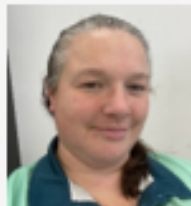
For all existing families please remember to edit your child's profile to their new homegroup/class for 2023.

This helps with the timely delivery of lunch orders.

# IN OTHER NEWS...

## Meet the team

at Berwick Lodge Primary School



**Kelly  
Warner**  
Coordinator

1. I have worked For Camp Australia for over 15 YEARS!!!
2. I have a little boy called Henry he's 2
3. I LOVE Art & Craft
4. I'm Scared of Spiders
5. I have 2 cats, 8 chickens and over 1 million Bees



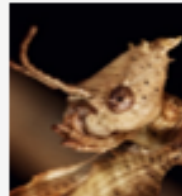
**Ben  
Gilbert**  
Educator

1. I Love Soccer
2. I have a cat called Marco
3. My favourite colour is Blue
4. My favourite TV show is Friends
5. I Love trying new Tea's



**Tracey  
Abbott**  
Educator

1. Love learning new art and craft
2. Really REALLY want a Maincoon Cat
3. Happiest when playing with my grandchildren
4. I've visited over 10 countries
5. I like trying new foods from different countries/cultures



**Spiny & Friends**  
Friend

1. We only eat Eucalyptus Leaves
2. We lay eggs that look like seeds
3. Only our boys can fly
4. I can grow new legs if I get hurt
5. I love to hide and camouflage

# Book now for 2023

Your  
OSHC.


Get  
Term 1  
ready!  
2023



Click to  
book



Child Care  
Subsidy  
available  
for eligible  
families.

by  Camp  
Australia

Register free with  
Camp Australia

[Click here to register](#)



Kickstart your  
school year with  
heaps of great info

[Read more](#)





## COME & TRY

### FOOTY 4 FUN



Experience Australia's most loved sport through AFL Victoria's FREE Footy 4 Fun events delivered across Victoria! A footy experience full of fun activities, modified games & memorable moments to take home with you!

*Footy 4 Fun 'Come & Try' is an opportunity for kids aged 5-12 years to experience an introduction to the basics of football in through fun activities.*

#### WHERE:

Berwick North Junior  
Football Club

#### WHEN:

Wednesday March 29th  
5pm - 6pm



**REGISTER HERE!**



# BUSINESS ADVERTISING



Ballet, dancing, gymnastics,  
acting, singing, confidence,  
coordination



**Come & try for free!**

Contact Sue:  
0407 056 801 / [sue@regencycalisthenics.com.au](mailto:sue@regencycalisthenics.com.au)  
[www.regencycalisthenics.com.au](http://www.regencycalisthenics.com.au)

come and join us at thebumblebee arts centre

## 小蜜蜂音乐艺术中心

### Instrumental Class

Piano / Guitar / Singing / Violin / Flute  
Drum / Music Theory

钢琴 / 吉他 / 唱歌 / 小提琴 / 长笛 / 架子鼓 / 音乐理论



**Free assessment for all lessons!**

**Tutoring Class after school**

**Year 2-6 & Year 7-12**

**Chinese**

**English**

**Math**

### Art Class

Oil Painting / Arts and Craft

油画 / 艺术手工 / 美术



**bumblebee arts centre**

### ALL AGES AND LEVELS WELCOME!

213 Tucker Rd, McKinnon  
Shop 1.33-39 Centre Way, Mount Waverley  
Suite 1/86 High Street Berwick VIC 3806.

Email: [info@bumblebeecentre.com.au](mailto:info@bumblebeecentre.com.au)  
Phone: +61 (0) 431 714 763  
contact: 0423851618 Jenny Wang  
To book or make an enquiry, please check us out at [bumblebeecentre.com.au](http://bumblebeecentre.com.au)

### Whats' more ?

Mini concerts

Mid- year concert and Christmas concert

Music competitions